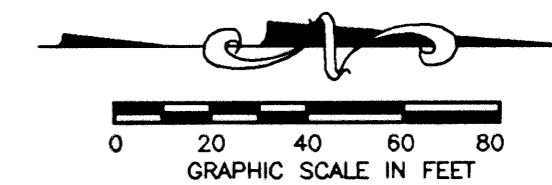


WINSTON TRAILS PARCEL TWENTY

PART OF WINSTON TRAILS P.U.D.
BEING A REPLAT OF TRACT G,
"WINSTON TRAILS EAST"
(PB 85, PGS 74-78)

SITUATE IN SECTION 2, TOWNSHIP 45 SOUTH, RANGE 42 EAST
PALM BEACH COUNTY, FLORIDA
NOVEMBER, 1999 SHEET 4 OF 6

0587-030



113

STATE OF FLORIDA
COUNTY OF PALM BEACH

THIS PLAT WAS FILED FOR
RECORD _____
THIS _____ DAY OF _____
AD, 2000 AND DULY RECORDED
IN PLAT BOOK _____ ON PAGES
_____ AND _____

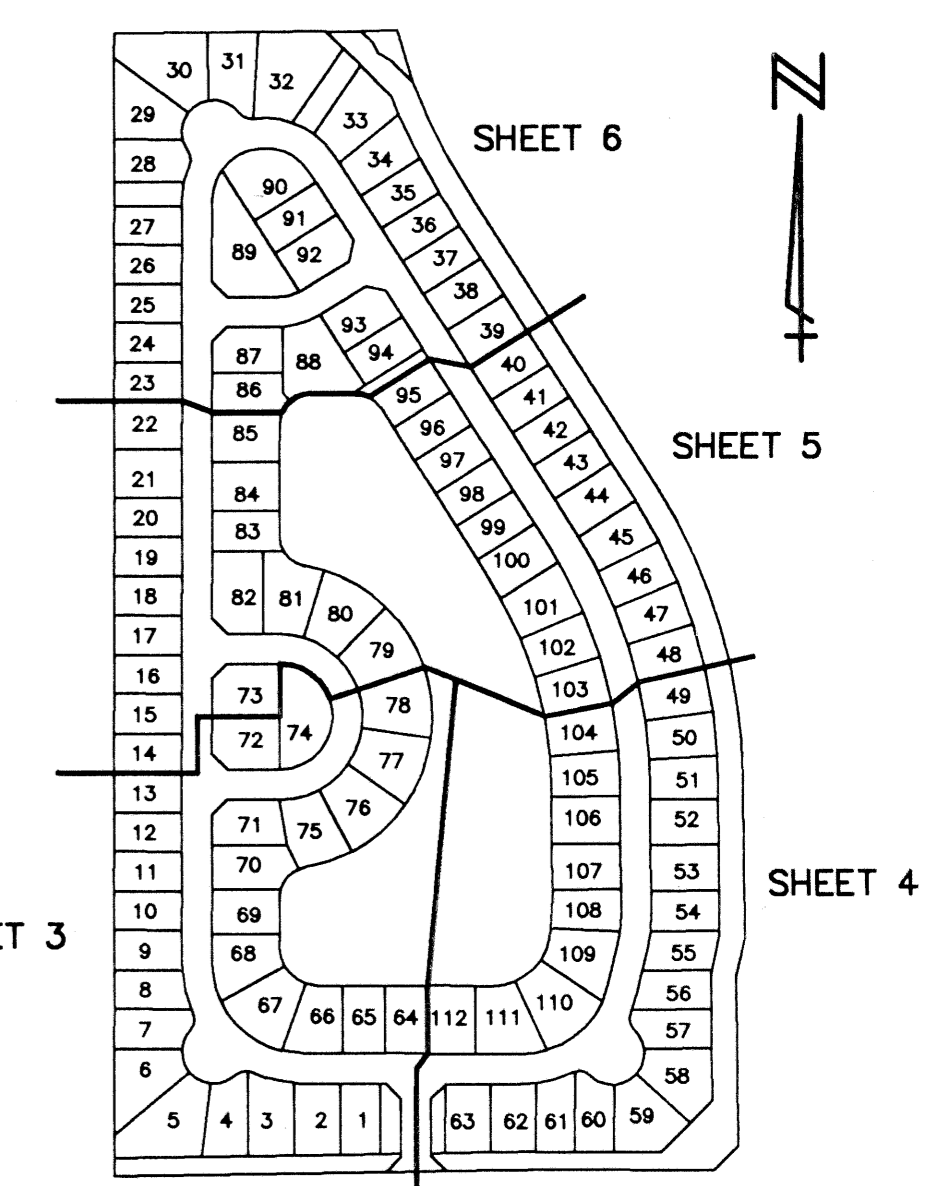
DOROTHY H. WILKEN, CLERK
By: _____, D.C.

CIRCUIT COURT SEAL

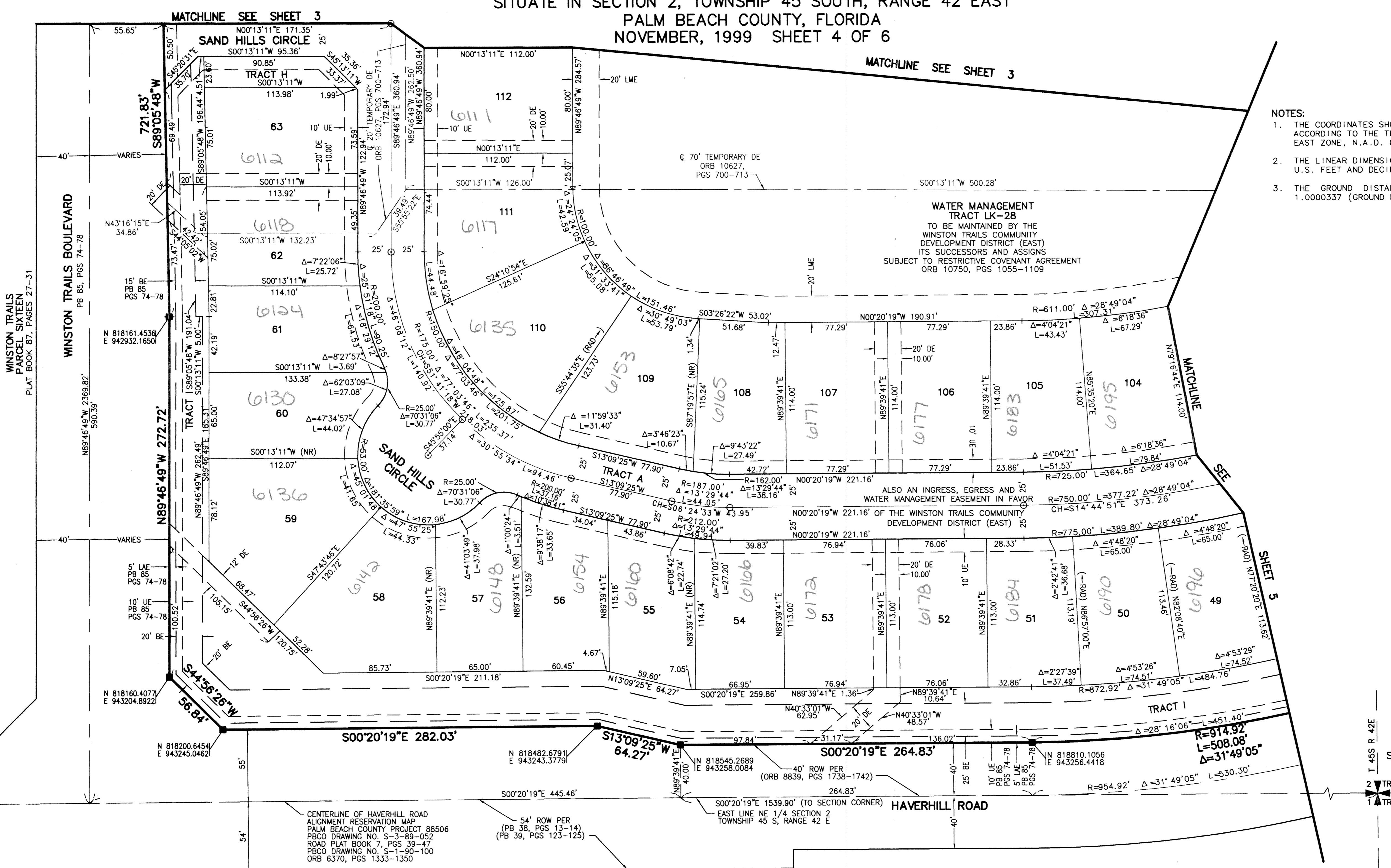
- NOTES:
1. THE COORDINATES SHOWN HEREON ARE STATE PLANE GRID COORDINATES ACCORDING TO THE TRANSVERSE MERCATOR PROJECTION OF THE FLORIDA EAST ZONE, N.A.D. 83, PER THE 1990 ADJUSTMENT.
 2. THE LINEAR DIMENSIONS SHOWN HEREON ARE GROUND DISTANCES IN U.S. FEET AND DECIMAL PARTS THEREOF.
 3. THE GROUND DISTANCE TO GRID DISTANCE SCALE FACTOR IS 1.0000337 (GROUND DISTANCE x SCALE FACTOR = GRID DISTANCE).

LEGEND

L	ARC LENGTH
AE	ACCESS EASEMENT
BE	BUFFER EASEMENT
Δ	CENTRAL (DELTA) ANGLE
CH	CHORD
DE	DRAINAGE EASEMENT
FPL	FLORIDA POWER & LIGHT
LAE	LIMITED ACCESS EASEMENT
LME	LAKE MAINTENANCE EASEMENT
LMAE	LAKE MAINTENANCE ACCESS EASEMENT
LWDD	LAKE WORTH DRAINAGE DISTRICT
(NR)	NON-RADIAL
ORB	OFFICIAL RECORD BOOK
PB	PLAT BOOK
P(S)	PAGE(S)
PUD	PLANNED UNIT OF DEVELOPMENT
R	RADIUS
RAD	RADIAL
(TYP)	TYPICAL
UE	UTILITY EASEMENT
□	PERMANENT REFERENCE MONUMENT
■	PERMANENT REFERENCE MONUMENT
○	SET LB-048
⊙	PERMANENT CONTROL POINT
⊖	SET LB-048
⊕	CENTERLINE



SHEET LOCATION MAP
NOT TO SCALE



SUBMITTER: WINSTON TRAILS
PAGE: 113
DRAWING NO.: 885
DATE: 11/13/99
SCALE: AS SHOWN
BY: MARY HANNA CLODFELTER
TITLE: PLAT OF CONCEPT HOMES OF LANTANA

PLAT OF
CONCEPT HOMES OF LANTANA
PLAT NO. 3
(PB 39, PGS 123-125)

PLAT OF
CONCEPT HOMES OF LANTANA
PLAT NO. 2
(PB 38, PGS 13-14)

WILLOUGHBY FARMS
(PB 86, PGS 198-204)

THIS INSTRUMENT WAS PREPARED BY MARY HANNA CLODFELTER, P.S.M., IN THE OFFICES OF MOCK, ROOS & ASSOCIATES, INC., 5720 CORPORATE WAY, WEST PALM BEACH, FLORIDA 33407.

SCALE:	1" = 40'
P.A. NO.:	98008.20
DATE:	NOVEMBER 1999
DRAWING NO.:	45-42-02-137

MOCK • ROOS
ENGINEERS • SURVEYORS • PLANNERS

5720 Corporate Way, West Palm Beach, Florida 33407
(561) 683-3113, fax 478-7248

SECTION 2, TOWNSHIP 45 SOUTH, RANGE 42 EAST
PALM BEACH COUNTY, FLORIDA

S:\mas\muserp20\dwg\pr20rp03.dwg 04/20/00 03:17:12 PM EDT

REV: 04-19-00
CAD FILE:
MUSSPR20/PR20RP03

SHEET 4 OF 6